

Schedule 2 – Phase 3 Expropriations

CITY OF OTTAWA

By-law No. _____

A BY-LAW TO PROVIDE FOR THE MAKING OF AN APPLICATION FOR APPROVAL TO EXPROPRIATE PROPERTY IN THE CITY OF OTTAWA, AS MORE PARTICULARLY DESCRIBED IN SCHEDULES “A” AND “B” TO THIS BY-LAW.

WHEREAS the City of Ottawa requires property described in Schedules “A” and “B” attached hereto for the purposes of the Ottawa Light Rail Transit system (the “OLRT”) including, but not limited to, for the purposes of facilitating the construction, operation and maintenance of light rail infrastructure, tunnel guideway corridors, tunnel portals, at grade guideway corridors, guideways, stations, station entrances and station to surface access points, platforms, bridges and bridge approaches and including temporary easements, varying in duration from 24 to 60 months as described in Schedule “A” hereto, for purposes including, but not limited to, construction of integrated station entrances, traffic management and detours, storage of excavated materials and construction materials and equipment, temporary power supply and to enter on the lands with all vehicles, machinery, workmen and material for construction, grading and relocation of utilities and for construction of berms, walking paths, fences, retaining walls, landscaping features and all other improvements and works ancillary to the OLRT;

AND WHEREAS pursuant to Section 6(1) of the *Municipal Act, 2001*, S.O. 2001, c. 25, as amended (hereinafter referred to as the “Municipal Act, 2001”), the power of a municipality to acquire land under this or any other Act includes the power to expropriate land in accordance with the *Expropriations Act*, R.S.O. 1990, c.E.26, as amended (hereinafter referred to as the “Expropriations Act”);

AND WHEREAS pursuant to Section 4 of the Expropriations Act, an expropriating authority, in this case, the City of Ottawa, shall not expropriate land without the approval of the approving authority, in this case, the Council of the City of Ottawa;

AND WHEREAS the City of Ottawa shall conduct the expropriation in accordance with the Expropriations Act.

NOW THEREFORE THE COUNCIL OF THE CITY OF OTTAWA HEREBY ENACTS AS FOLLOWS:

1. THAT the Council of the City of Ottawa hereby approves the making of an application for approval to expropriate land by the City of Ottawa, in respect of the property described in in Schedule “2A” and Schedule “2B”, appended hereto.
2. THAT the Mayor, the City Clerk, the Director of the Real Estate Partnerships and Development Office and the Director of the Rail Implementation Office or any one of them are hereby authorized to execute, on behalf of the City of Ottawa, an Application for Approval to Expropriate the property described in Schedule “2A” and Schedule “2B”, appended hereto.

3. THAT the Mayor, the City Clerk, the Director of the Real Estate Partnerships and Development Office and the Director of the Rail Implementation Office or any one of them are hereby authorized to execute, on behalf of the City of Ottawa, Notice of Application for Approval to Expropriate Land for the property described in Schedule "2A" and Schedule "2B", appended hereto and that such Notice be served and published, as required by the Expropriations Act.

4. THAT, in the event an owner or registered owner requests a hearing of necessity, and a report of the inquiry officer is issued, the report of the inquiry officer shall come before Council of the City of Ottawa for consideration.

5. THAT the Officers and authorized agents of the City of Ottawa be and they are hereby otherwise authorized and directed to do all things required arising from the authorizations provided for by this By-law.

6. THAT this By-law comes into force on the day it is passed.

READ and PASSED this 19th day of December, 2012.

CLERK

MAYOR

SCHEDULE “2A” - BY-LAW NO

Those lands in the City of Ottawa described as follows:

All right, title and interest in the stratified portion of the following lands:

Part of PIN 04112-0189 (LT) being a strata interest in Part of Lot B, Part Lots A & C, Plan 6412, Part Lots E, F & G, Plan 8609 & Part Lot 40, Concession A, Ottawa, designated as Parcels 1 and 2 on Property Sketch No. 14152p001-REV7-005f.dgn.

Part of PIN 04115-0035 (LT) being a strata interest in Part of Lot 25, Plan 3922, North Queen St, Numbering Eastward, Ottawa, designated as Parcel 1 on Property Sketch No. 14152p001-REV7-030e.dgn.

Part of PIN 04115-0036 (LT) being a strata interest in Part of Lot 26, Plan 3922, North Queen St, Numbering Eastward, Ottawa, designated as Parcel 2 on Property Sketch No. 14152p001-REV7-030e.dgn.

Part of PIN 04210-0115 (LT) being a strata interest in Part of Part Lot 16, Plan 3922, Lot 15, Plan 3922, South Rideau St; Lot 15 & Part Lot 16, Plan 3922, North Besserer St, as in N747157, Ottawa, designated as Parcel 1 on Property Sketch No. 14152p001-REV7-035c.dgn.

Part of PIN 04210-0114 (LT) being a strata interest in Part of Part Lot 16 & Lot 17, Plan 3922, South Rideau St; Part Lot 16 & Lot 17, Plan 3922, North Besserer St, as in N472594, Ottawa, designated as Parcel 1 on Property Sketch No. 14152p001-REV7-036c.dgn.

Part of PIN 04125-0001 (LT) being being Part of Lots A, B, C & 1, Plan 25270; Lots 2, 3, 4, 5, 6 & 7, Plan 25270, E/S Waller St; Lots 2, 3, 4, 5, 6, 7, 8 & 9, Plan 25270, W/S Hastey Ave; Lot 8, Plan 25270, in Rear of Lot 8, Plan 25270, W/S Hastey; Lot 9, Plan 25270, in Rear of Lot 9, Plan 25270, W/S Hastey; Lots 1, 2 & 3, Plan 15632, N/S Osgoode Ave; Part Lot 17, Plan 3350, E/S Nicholas St; Lots 18 & 19, Plan 3350, E/S Nicholas St, except Part 3, 5R-10729, Ottawa, designated as Parcel 1 on Property Sketch No. 14152p001-REV7-039c.dgn.

Part of PIN 04210-0113 (LT) being a strata interest in Part Lot 19, Plan 3922, South Rideau St, Part Lot 19, Plan 3922, North Besserer St, Ottawa, designated as Parcel 1 on Property Sketch No. 14152p001-REV7-101d.dgn.

Part of PIN 04210-0112 (LT) being a strata interest in Part Lot 19, Plan 3922, North Besserer St; Part Lot 19, Plan 3922, South Rideau St, Ottawa, designated as Parcel 1 on Property Sketch No. 14152p001-REV7-102d.dgn.

Part of PIN 04210-0110 (LT) being a strata interest in Part Lot 21, Plan 3922, North Besserer St, Ottawa, designated as Parcel 1 on Property Sketch No. 14152p001-REV7-107c.dgn.

Part of PIN 04210-0111 (LT) being a strata interest in Part of Part Lot 20, Plan 3922, North Besserer St, as in N544387, Ottawa, designated as Parcel 1 on Property Sketch No. 14152p001-REV7-108d.dgn.

Part of PIN 04115-0277 (LT) being a strata interest in Part of the Leasehold Interest in Lots 27 and 28 South Sparks St, Numbering Eastward and Lots 27, 28 and Part of Lot 29 North Queen St, Numbering Eastward, Plan 3922, Ottawa, designated as Parcel 1 on Property Sketch No. 14152p001-REV7-209b.dgn.

An estate, right or interest, for a limited time in the nature of a temporary easement for a period of thirty (30) months, in the following lands:

Part of PIN 04125-0011 (LT) being Part of Lots 6, 7, 8, 9, 10, 11 & 12, Plan 3613, E/S Nicholas St, except N412596; Part of Lot 22, Plan 40654, W/S Cumberland St, Ottawa, designated as Parcel 2 on Property Sketch No. 14152p001-REV7-062b.dgn.

Part of PIN 04125-0015 (LT) being Part of Cumberland St, Plan 15632, Closed by CR578571 & N440800; Ottawa/Nepean, designated as Parcel 3 on Property Sketch No. 14152p001-REV7-062b.dgn.

Part of PIN 04125-0008 (LT) being Part of Lot 18, Plan 15632, E/S Cumberland St, Ottawa, designated as Parcel 4 on Property Sketch No. 14152p001-REV7-062b.dgn.

Part of PIN 04125-0013 (LT) being Part of Lot E, Concession D, Rideau Front (Formerly Somerset St), Reserve (West of Somerset St), Plan 15632 & Part Somerset St, Plan 15632, Closed by N381086, Ottawa, designated as Parcel 5 on Property Sketch No. 14152p001-REV7-063.dgn.

Part of PIN 04125-0012 (LT) being Part of Lot E, Concession D, Rideau Front, Nepean & Part of Block 42, Plan 15632, Ottawa, designated as Parcel 6 on Property Sketch No. 14152p001-REV7-063.dgn.

Part of PIN 04125-0012 (LT) being Part of Lot E, Concession D, Rideau Front, Ottawa/Nepean, designated as Parcel 7 on Property Sketch No. 14152p001-REV7-063.dgn.

An estate, right or interest, for a limited time in the nature of a temporary easement for a period of sixty (60) months, in the following lands:

Part of PIN 04114-0364 (LT) being Part of Lots A, B, 1 & 2 South Queen St, Numbering Westward, Plan 3922 & Part of Lot 1 South Queen St, Numbering Eastward, Plan 3922, Ottawa, designated as Parcel 1 on Property Sketch No. 14152p001-REV7-021.dgn.

Part of PIN 04125-0001 (LT) being Part of Lots A, B, C & 1, Plan 25270; Lots 2, 3, 4, 5, 6 & 7, Plan 25270, E/S Waller St; Lots 2, 3, 4, 5, 6, 7, 8 & 9, Plan 25270, W/S Hastey Ave; Lot 8, Plan 25270, in Rear of Lot 8, Plan 25270, W/S Hastey; Lot 9, Plan 25270, in Rear of Lot 9, Plan 25270, W/S Hastey; Lots 1, 2 & 3, Plan 15632, N/S Osgoode Ave; Part Lot 17, Plan 3350, E/S Nicholas St; Lots 18 & 19, Plan 3350, E/S Nicholas St, except Part 3, 5R-10729, Ottawa, designated as Parcels 2 and 3 on Property Sketch No. 14152p001-REV7-039c.dgn.

Part of PIN 04210-0159 (LT) being Part of Lot 3, Plan 9661, North of Laurier Ave. E., Part of Part Lots A & 4, Plan 9661, South Wilbrod St; Part of Lot 25, Plan 3922, West Waller St; Part Wilbrod St, Plan 3922, Closed by N356592, Ottawa designated as Parcel 1 on Property Sketch No. 14152p001-REV7-059d.dgn.

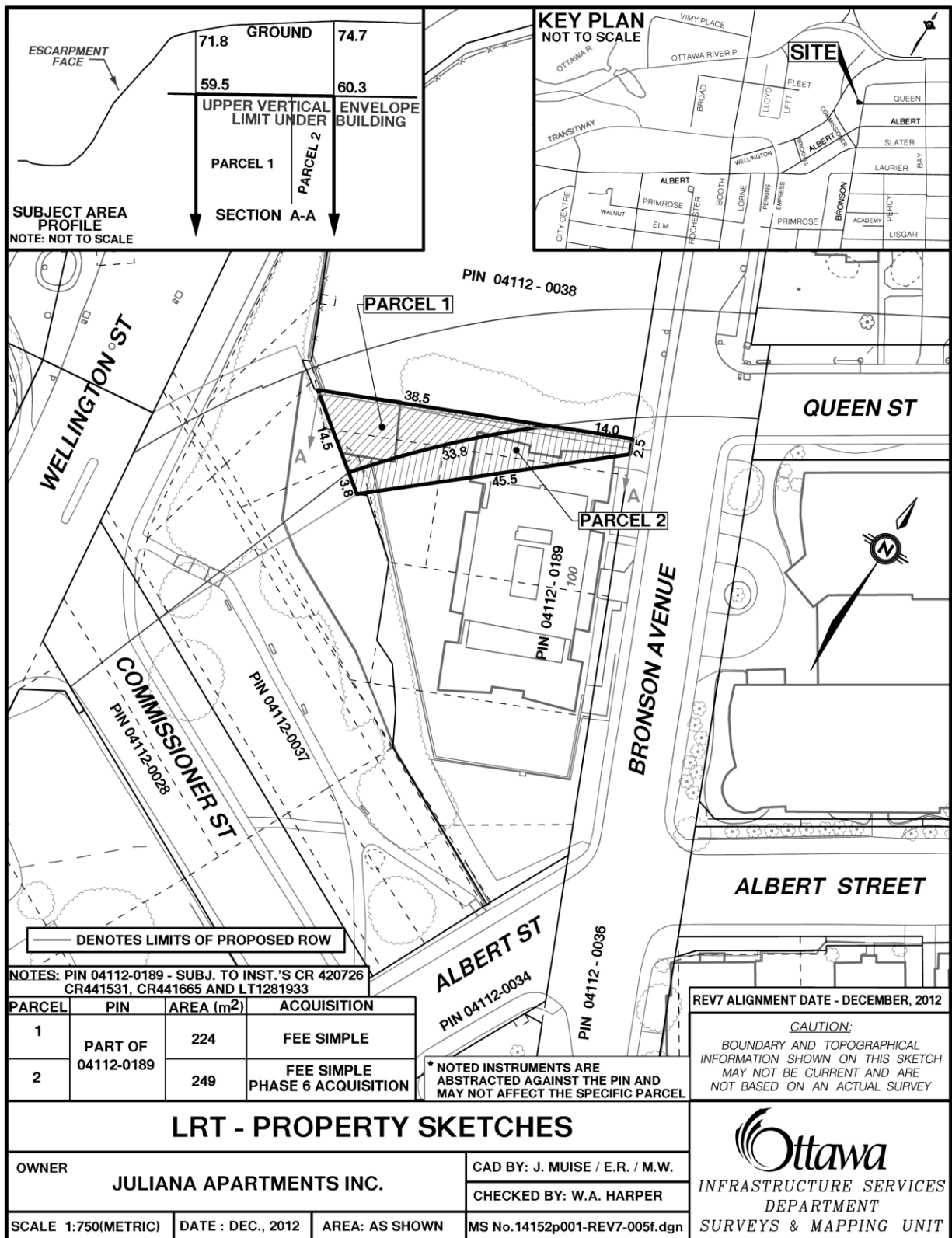
Part of PIN 04125-0024 (LT) being Part of Lot 17, Plan 3350, Closed by N440798, Ottawa, designated as Parcel 4 on Property Sketch No. 14152p001-REV7-061a.dgn.

Part of PIN 04125-0010 (LT) being Part of Lots 1, 2, 3 & 4, Plan 3613, East Nicholas St. & Part of Lots 15 & 16, Plan 3350 East Nicholas St., Ottawa, designated as Parcel 5 on Property Sketch No. 14152p001-REV7-061a.dgn.

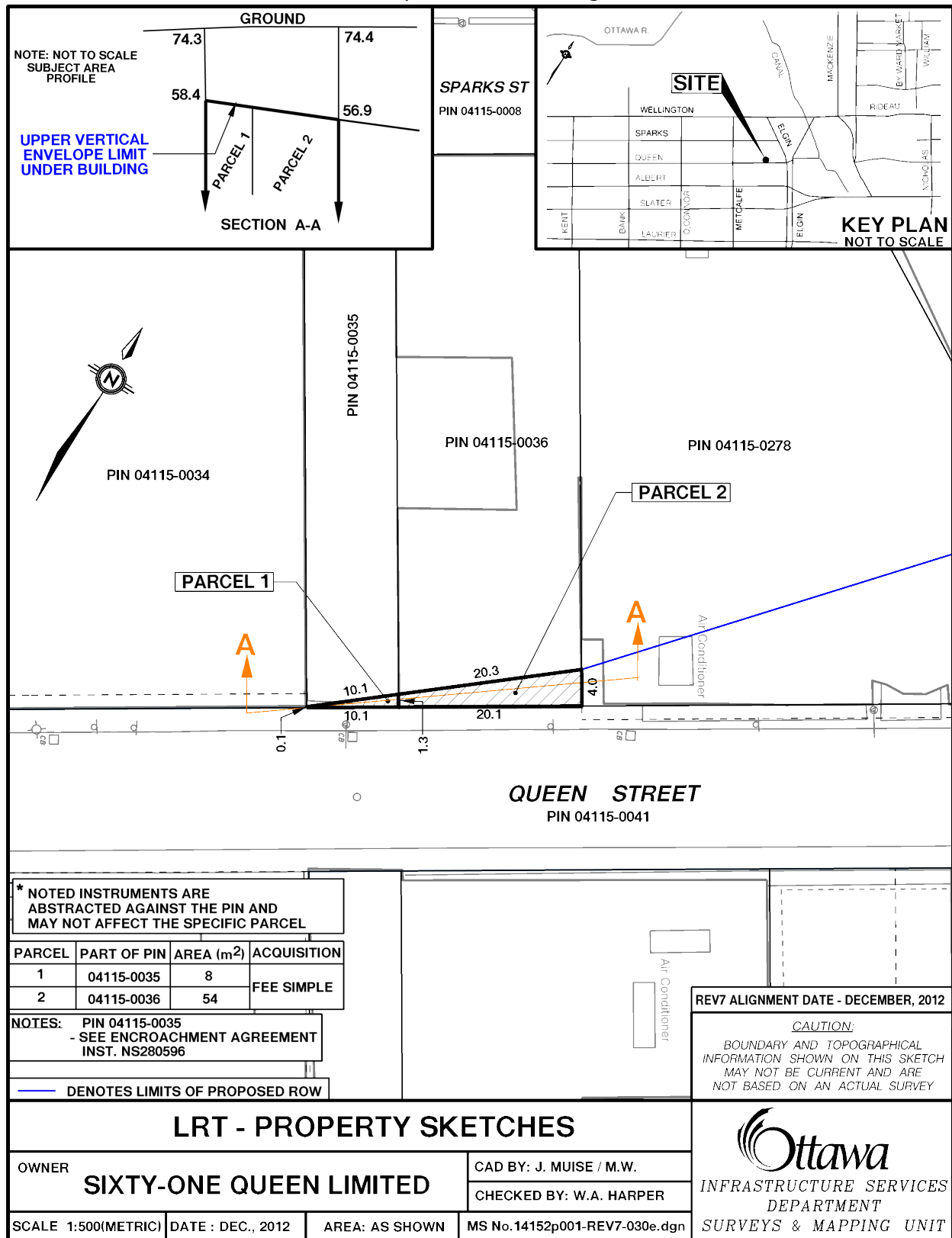
Part of PIN 04125-0199 (LT) being Part of Part Lots 4 & 5, Plan 3613, as Stopped up & Closed by By-law 285-68 registered as CR547924, Ottawa, designated as Parcel 6 on Property Sketch No. 14152p001-REV7-061a.dgn.

Part of PIN 04114-0022 (LT) being Part of Parcel 3-4, Sec 3922; Part Lots 5 & 11 & Lots 6, 7, 8, 9 & 10, Plan 3922, South Side Sparks St, Numbering Westward; Part Lots 5, 6, 7, 8, 9, 10 & 11 Plan 3922, North Side Queen St, Numbering Westward, Ottawa/Nepean, designated as Parcel 1 on Property Sketch No. 14152p001-REV7-246c.dgn.

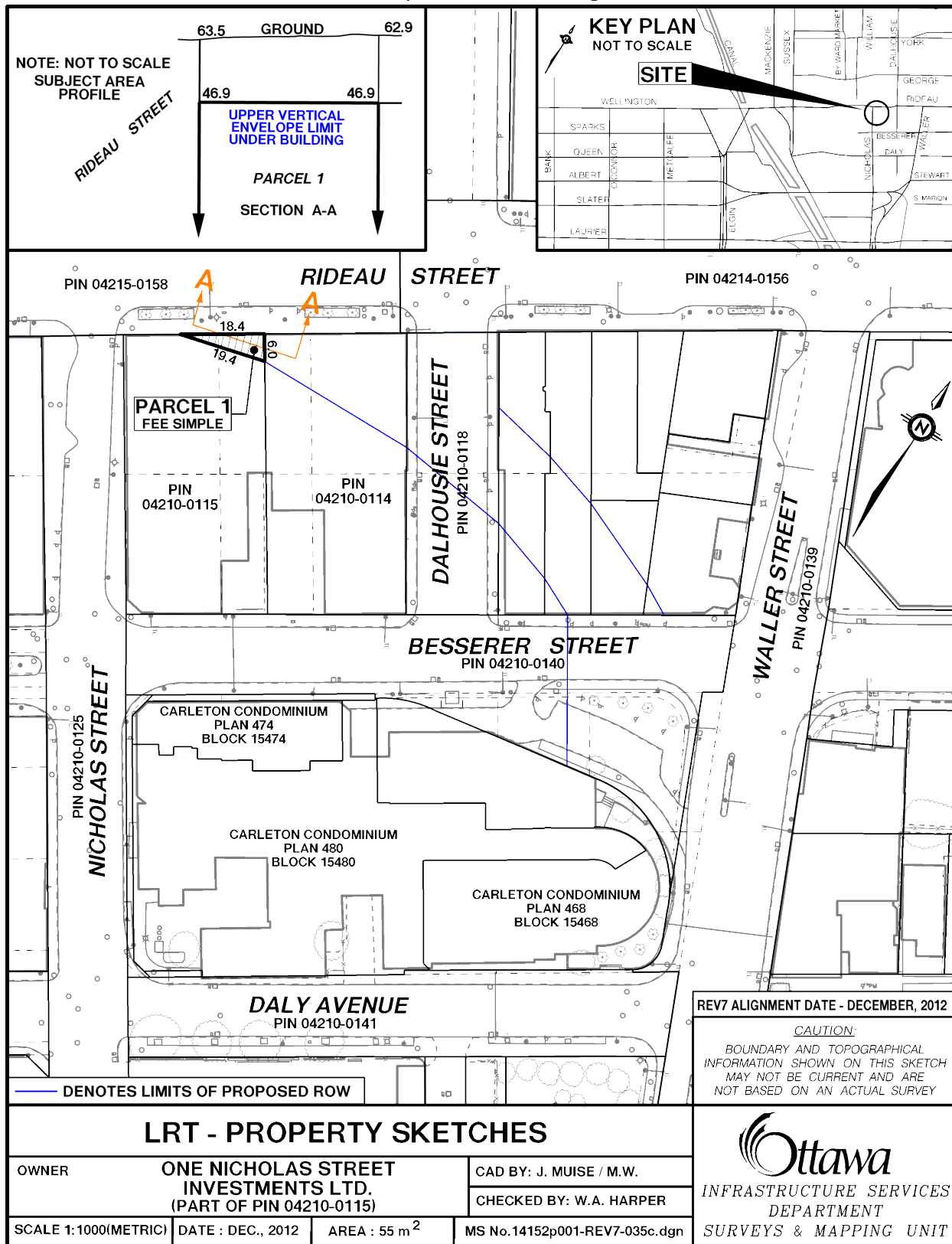
SCHEDULE "2B" - BY-LAW NO - 14152p001-REV7-005f.dgn



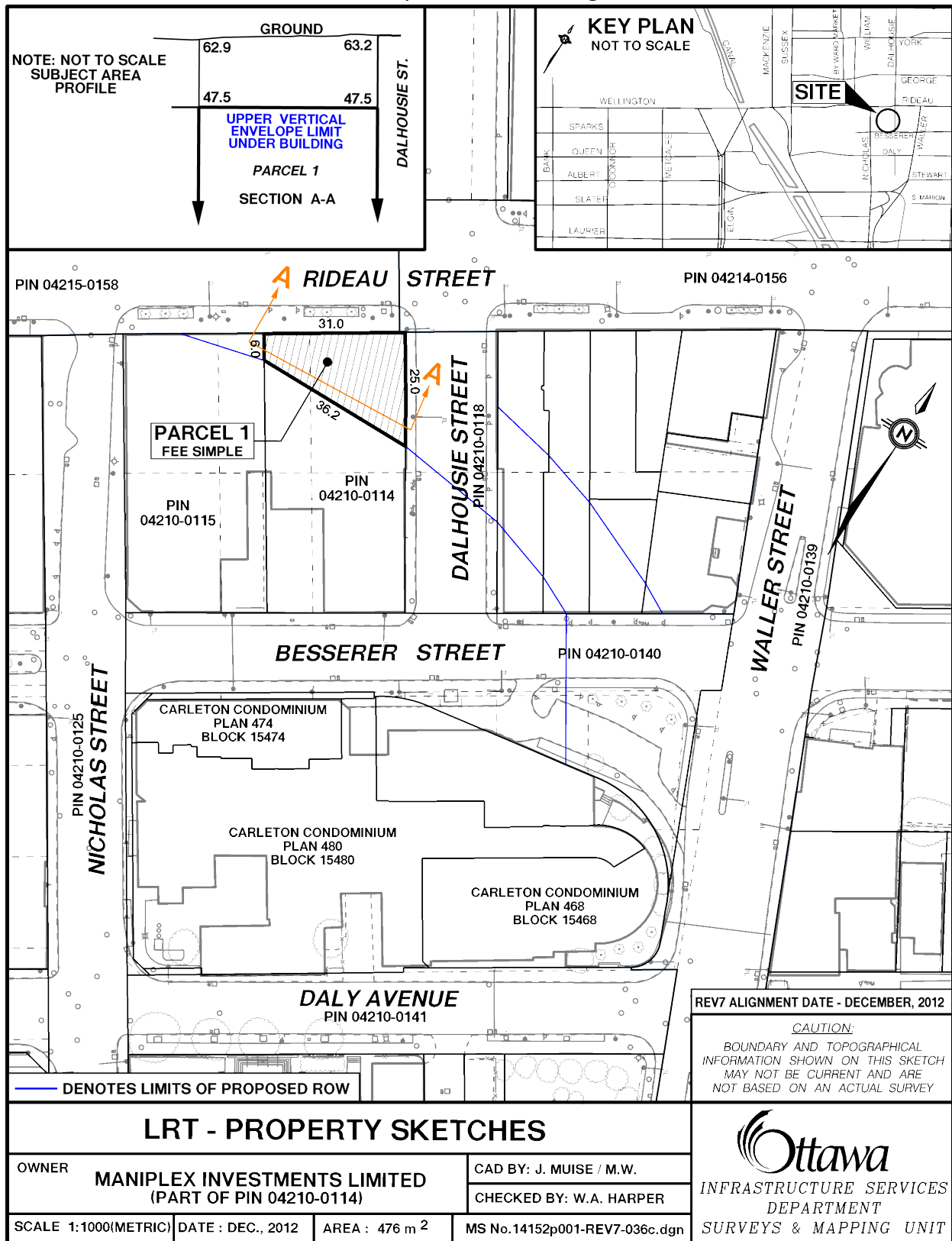
14152p001-REV7-030e.dgn



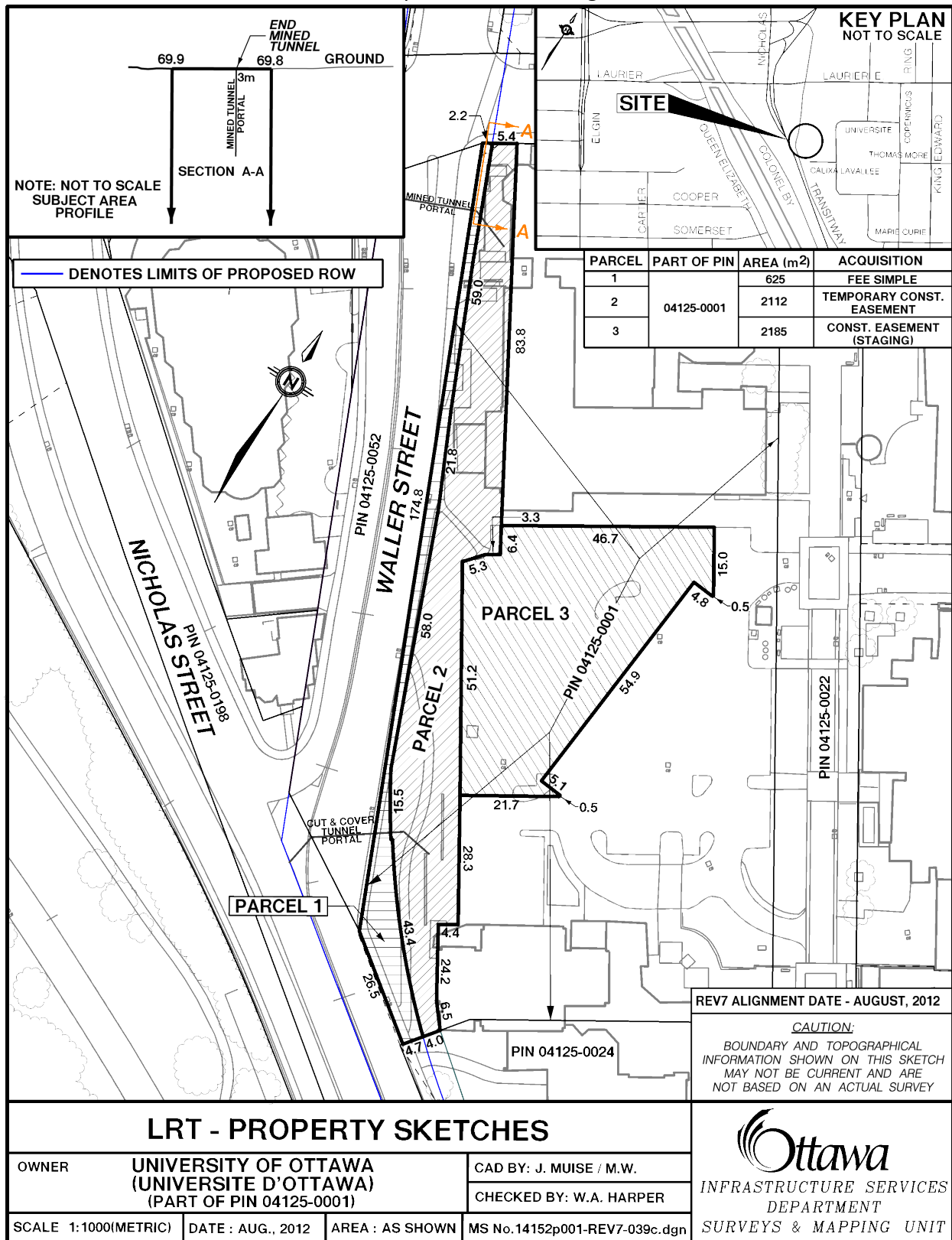
14152p001-REV7-035c.dgn



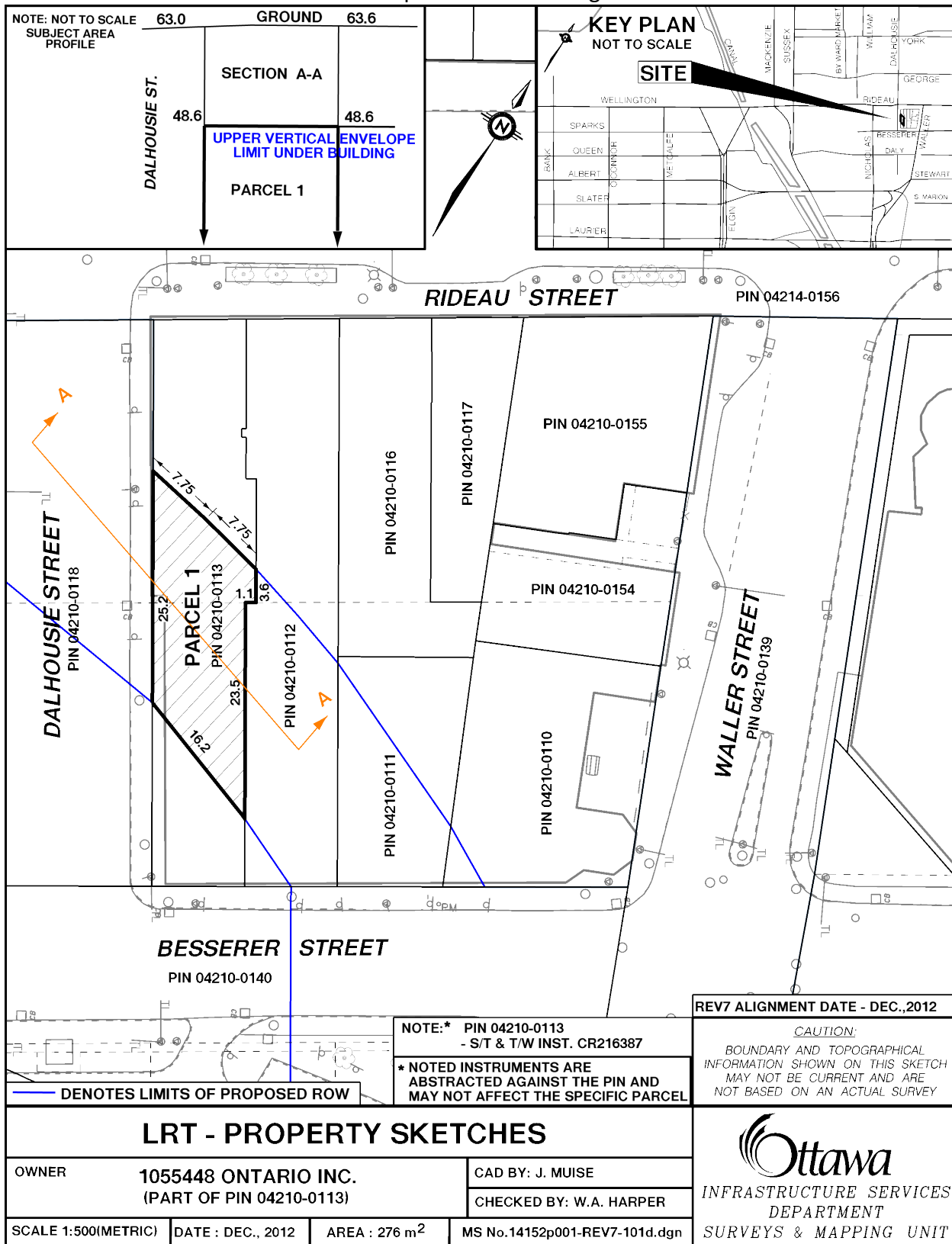
14152p001-REV7-036c.dgn



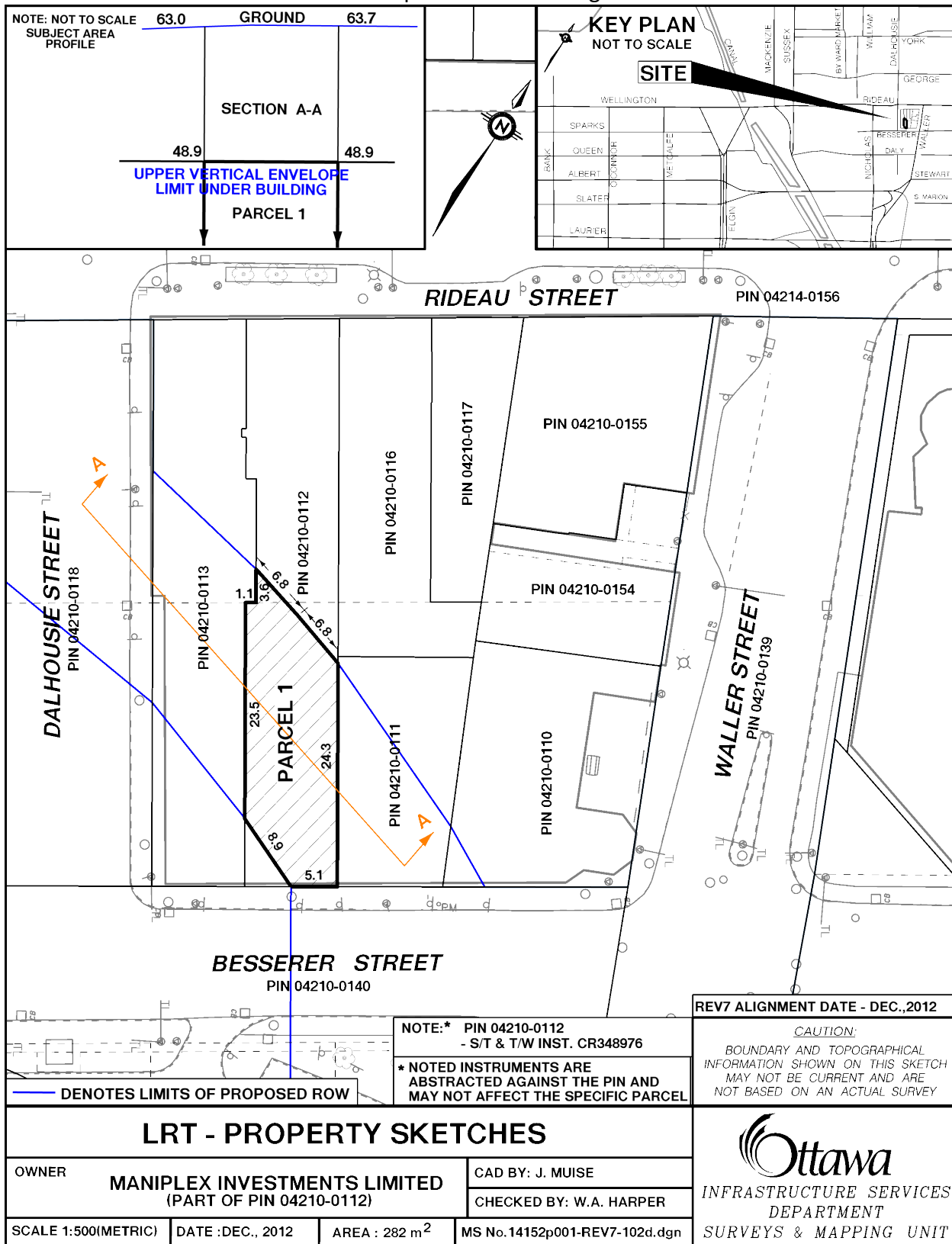
14152p001-REV7-039c.dgn



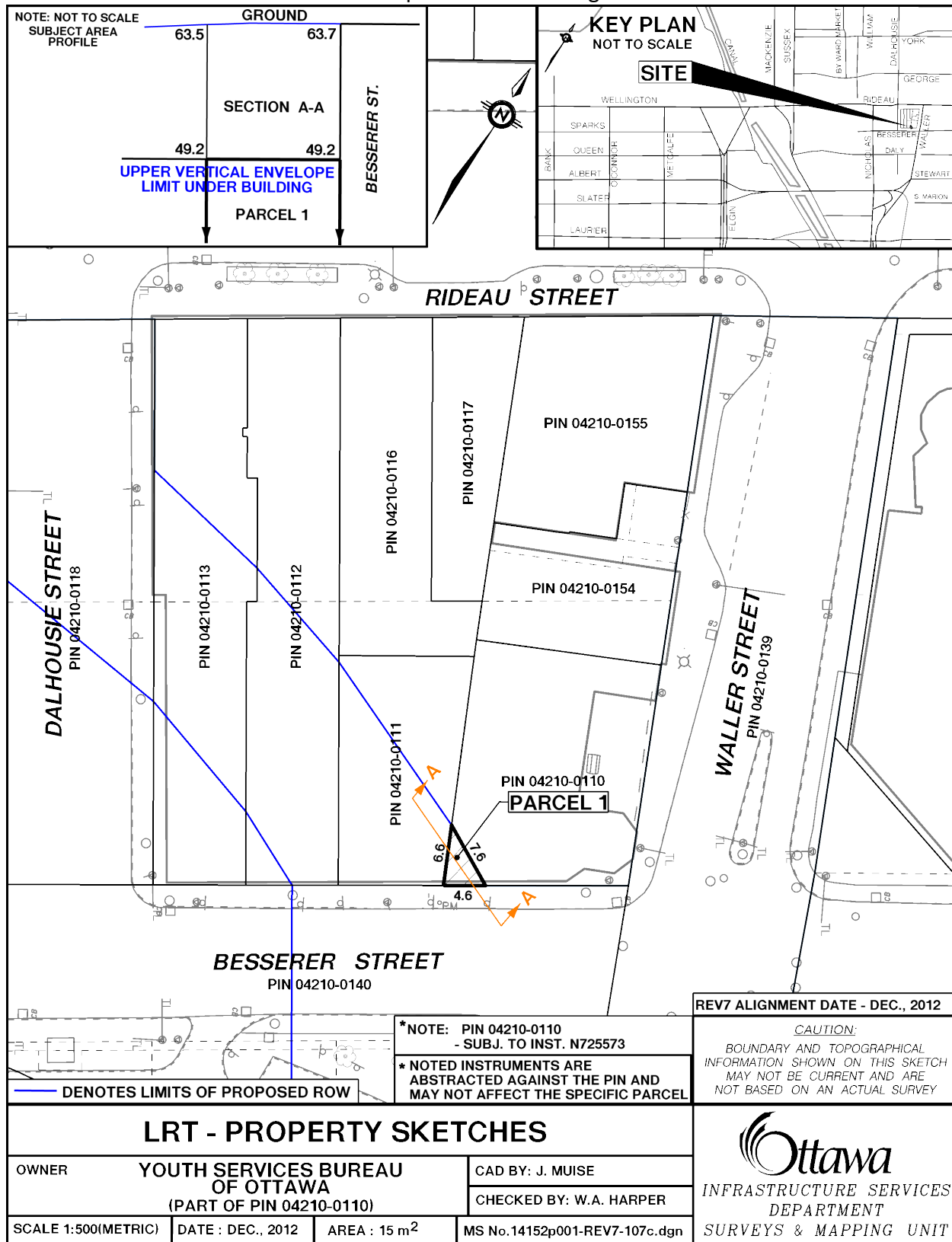
14152p001-REV7-101d.dgn



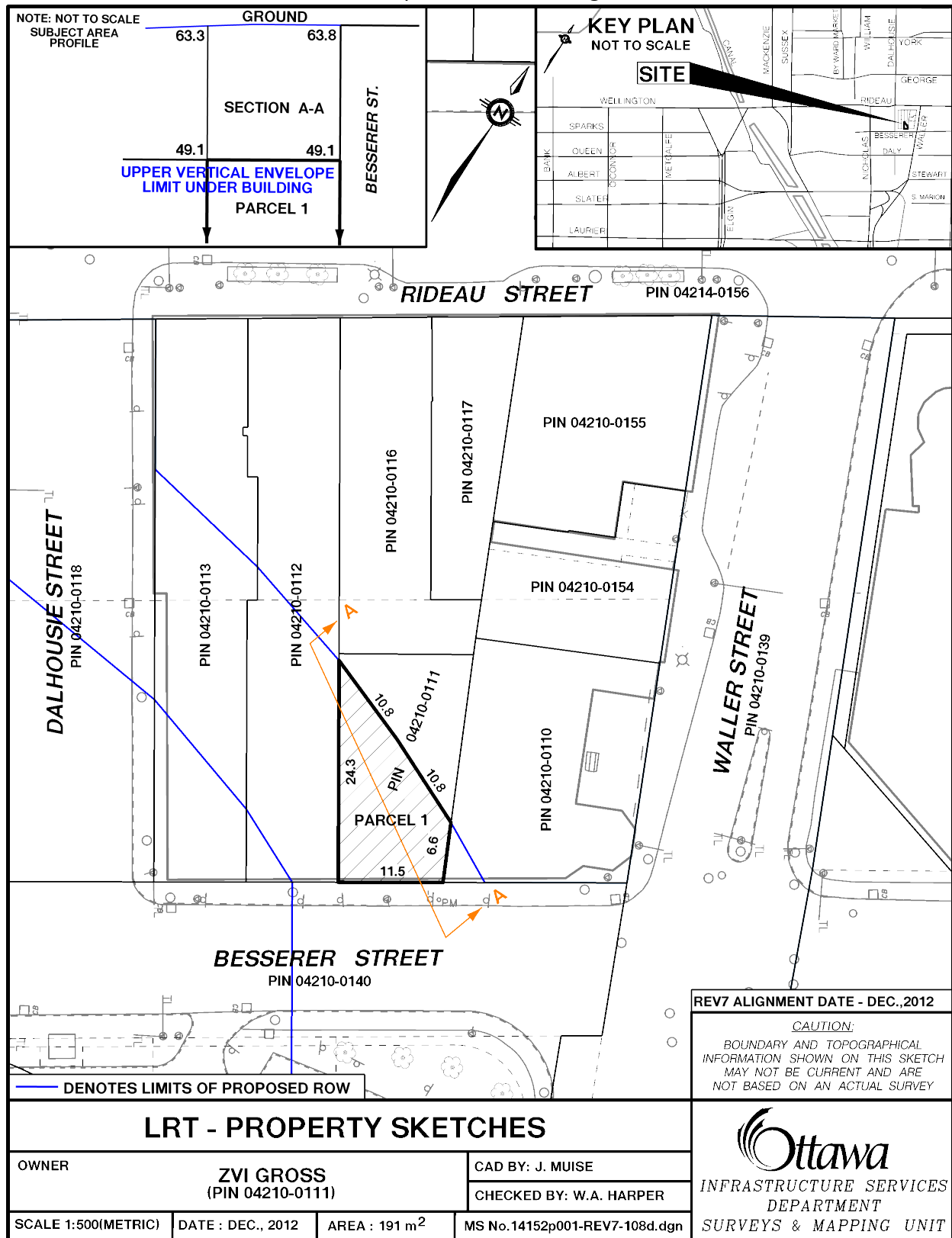
14152p001-REV7-102d.dgn



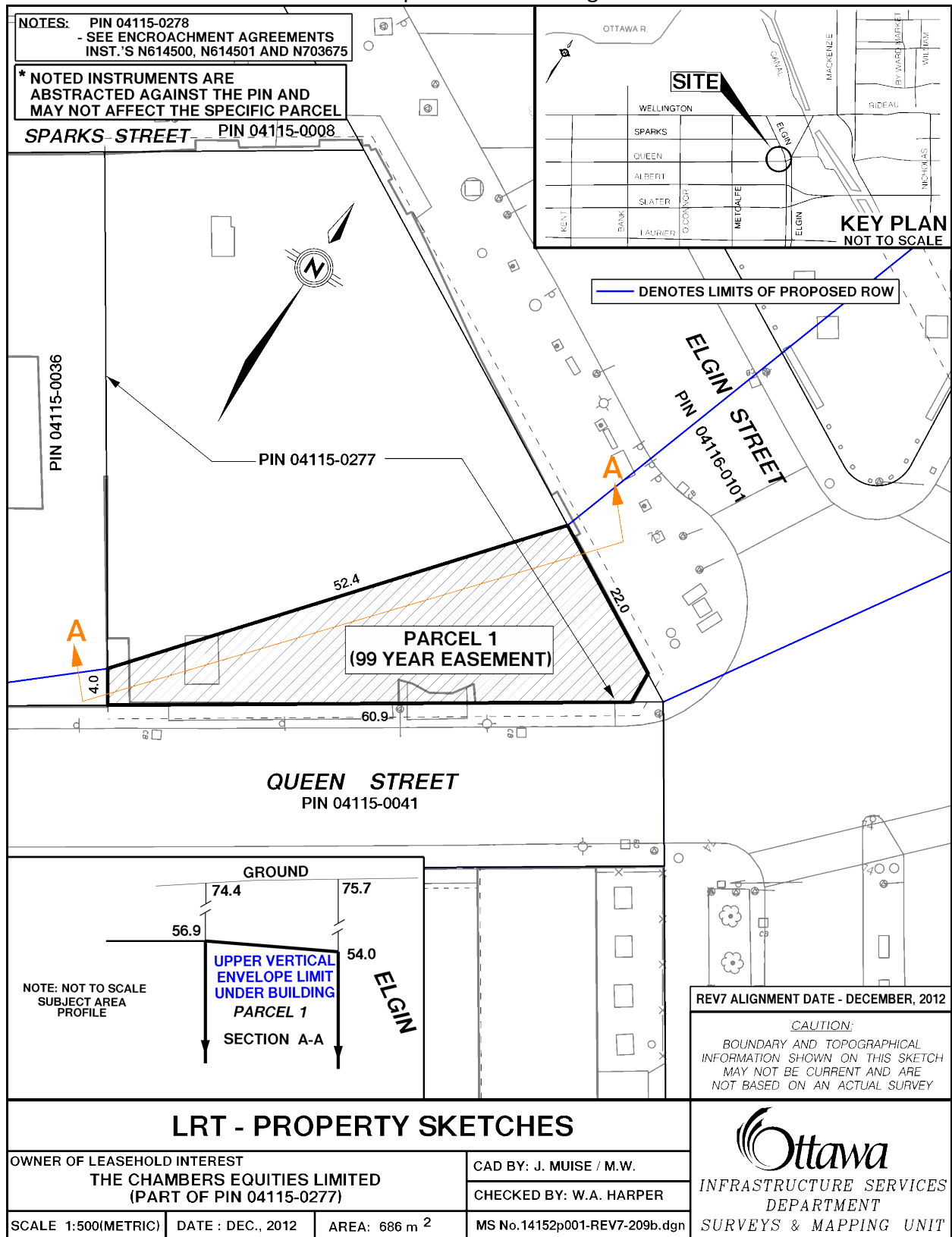
14152p001-REV7-107c.dgn



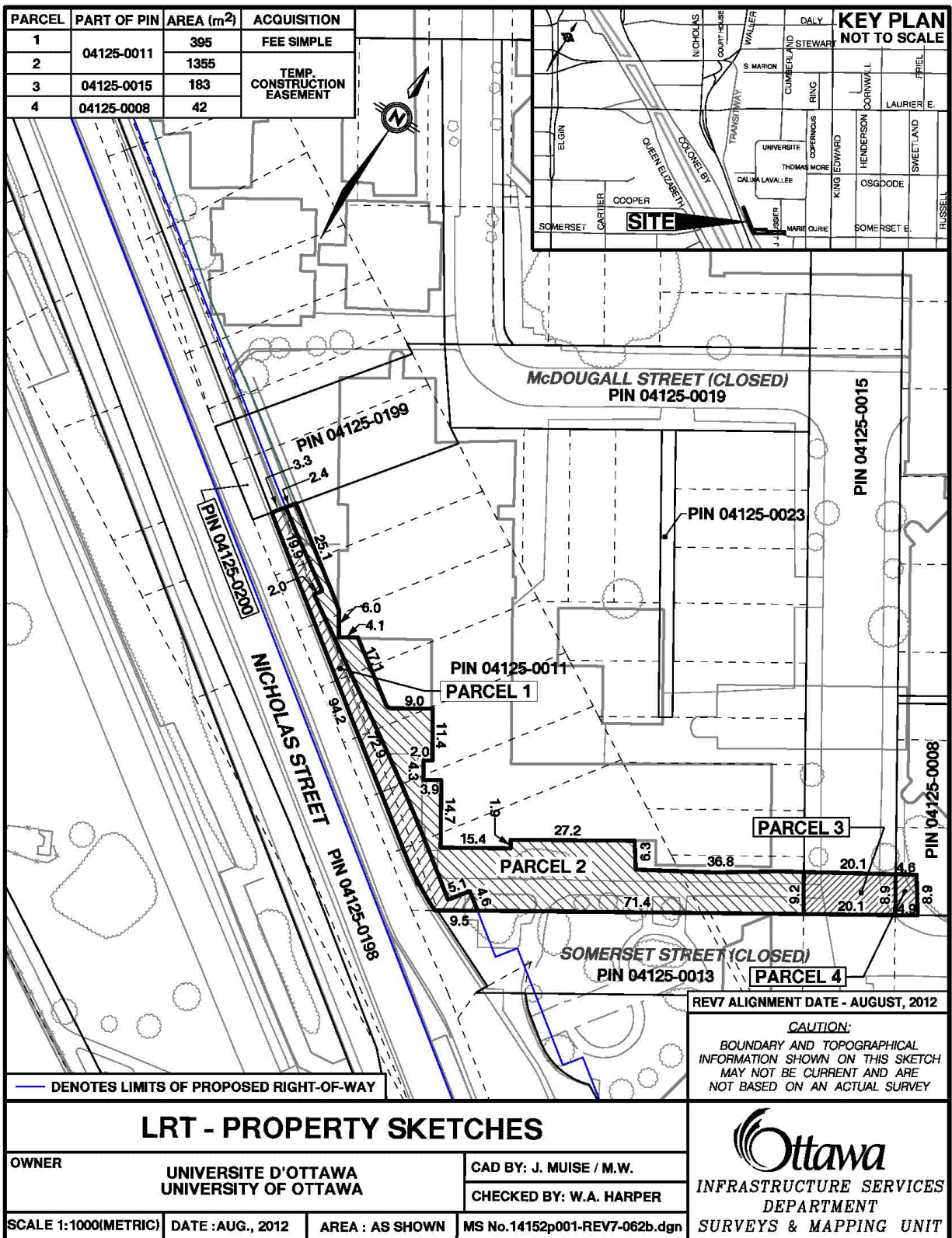
14152p001-REV7-108d.dgn



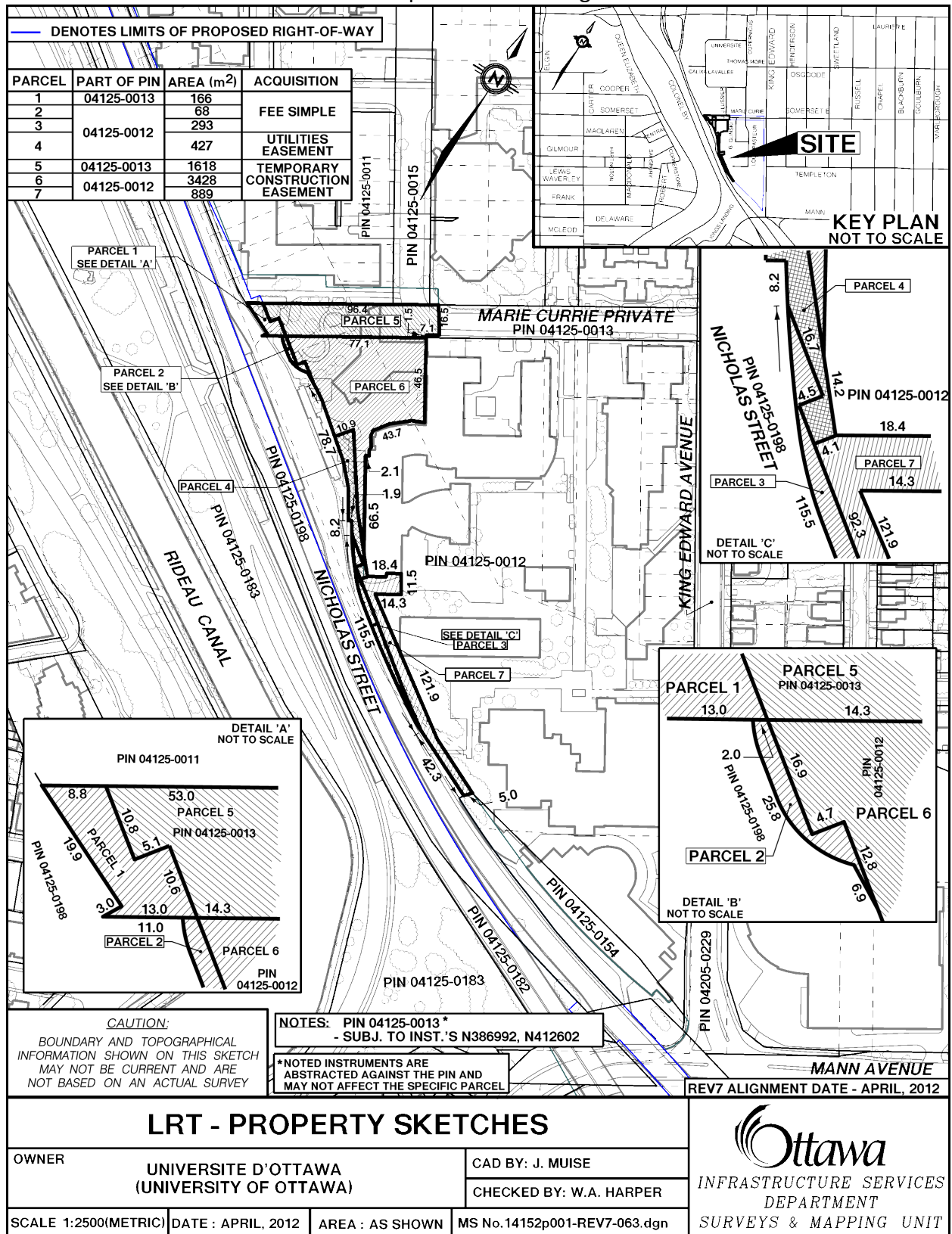
14152p001-REV7-209b.dgn



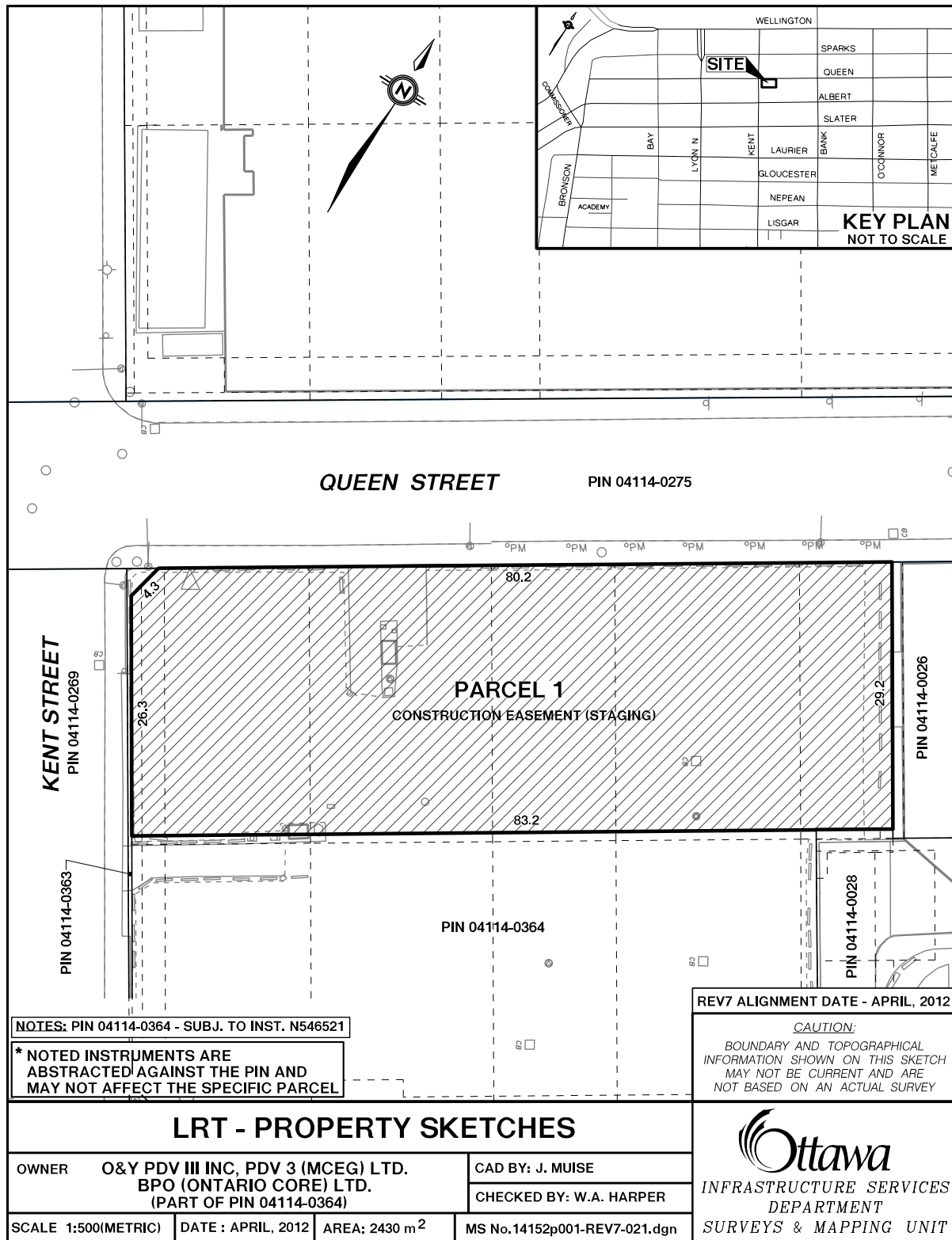
14152p001-REV7-062b.dgn



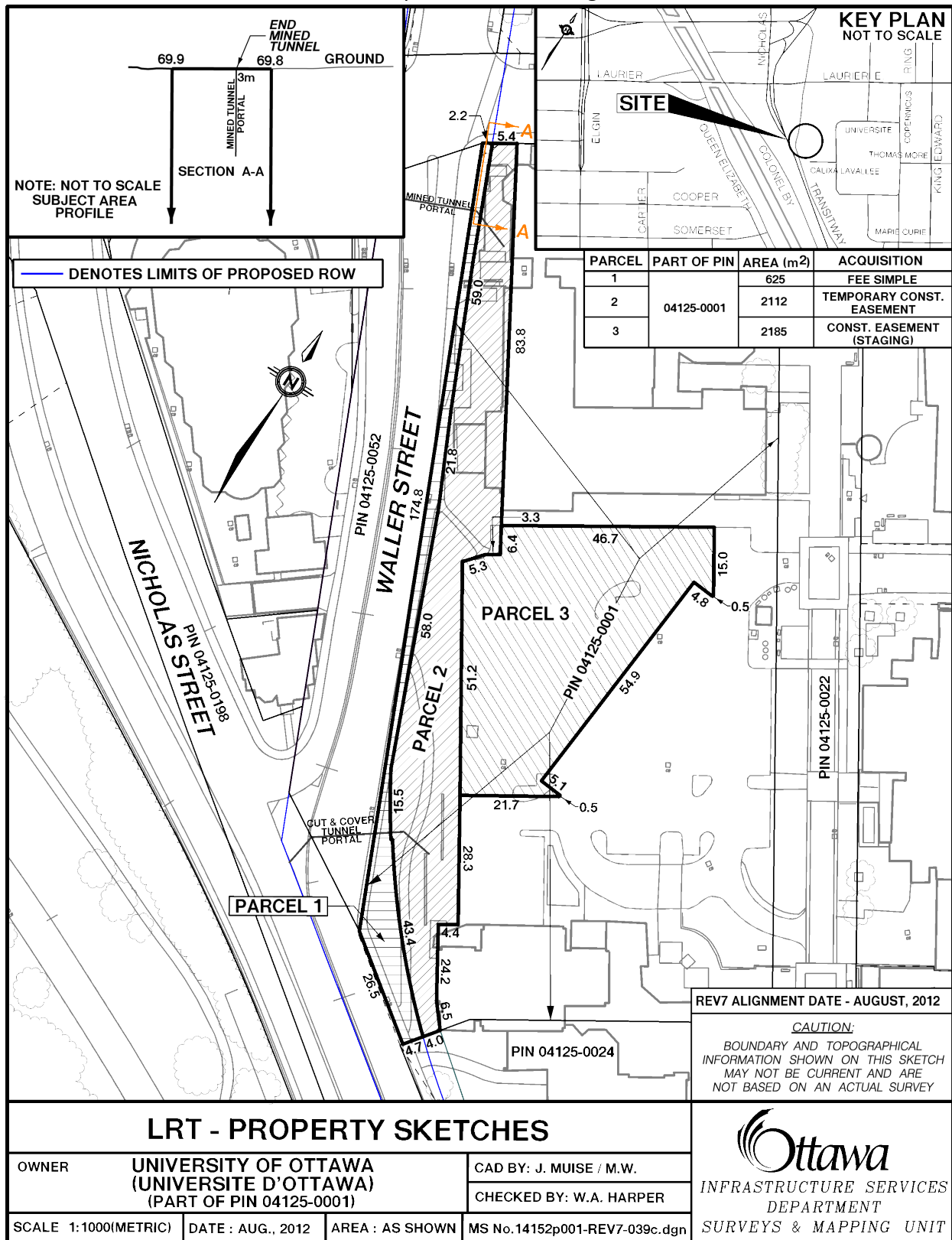
14152p001-REV7-063.dgn



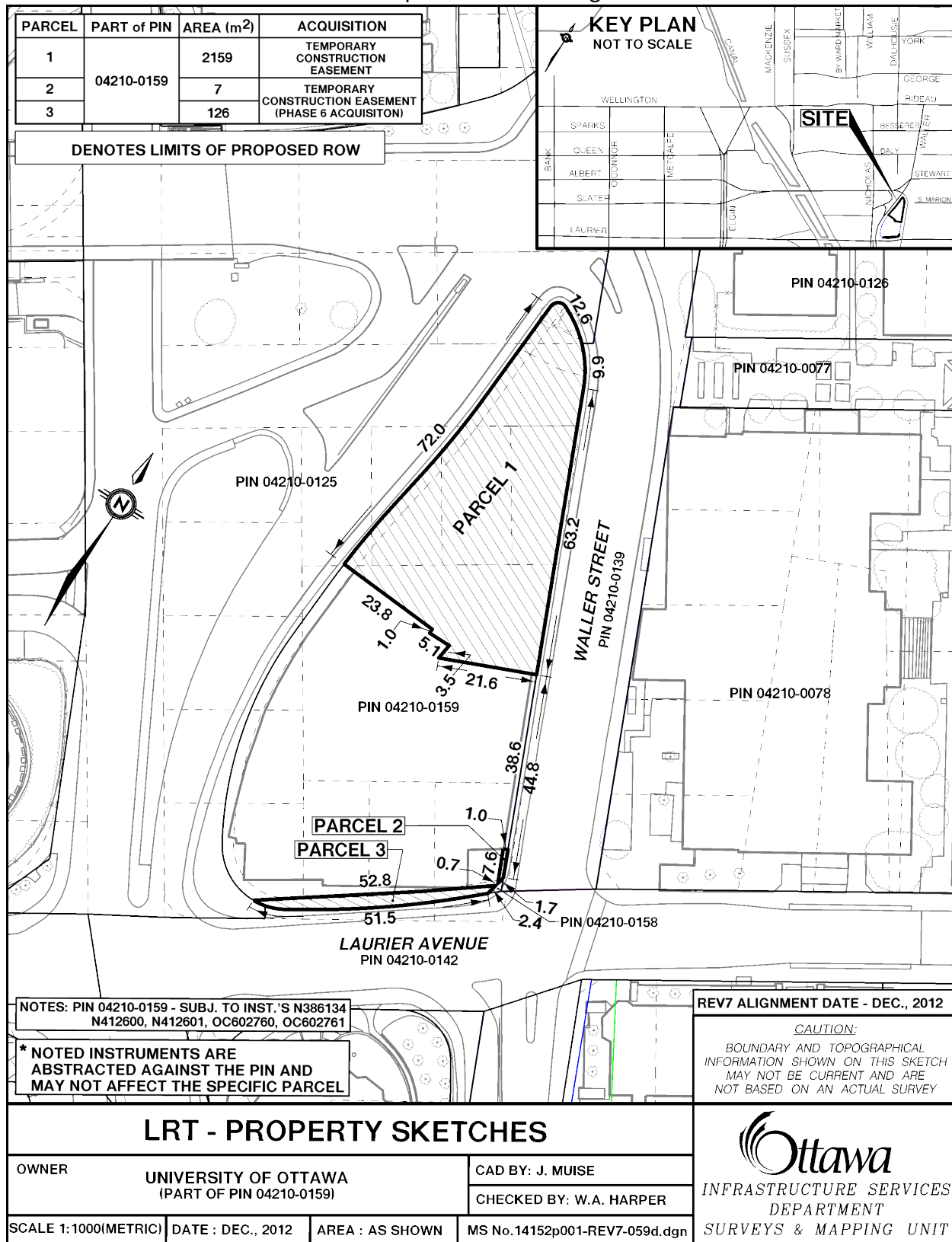
14152p001-REV7-021.dgn



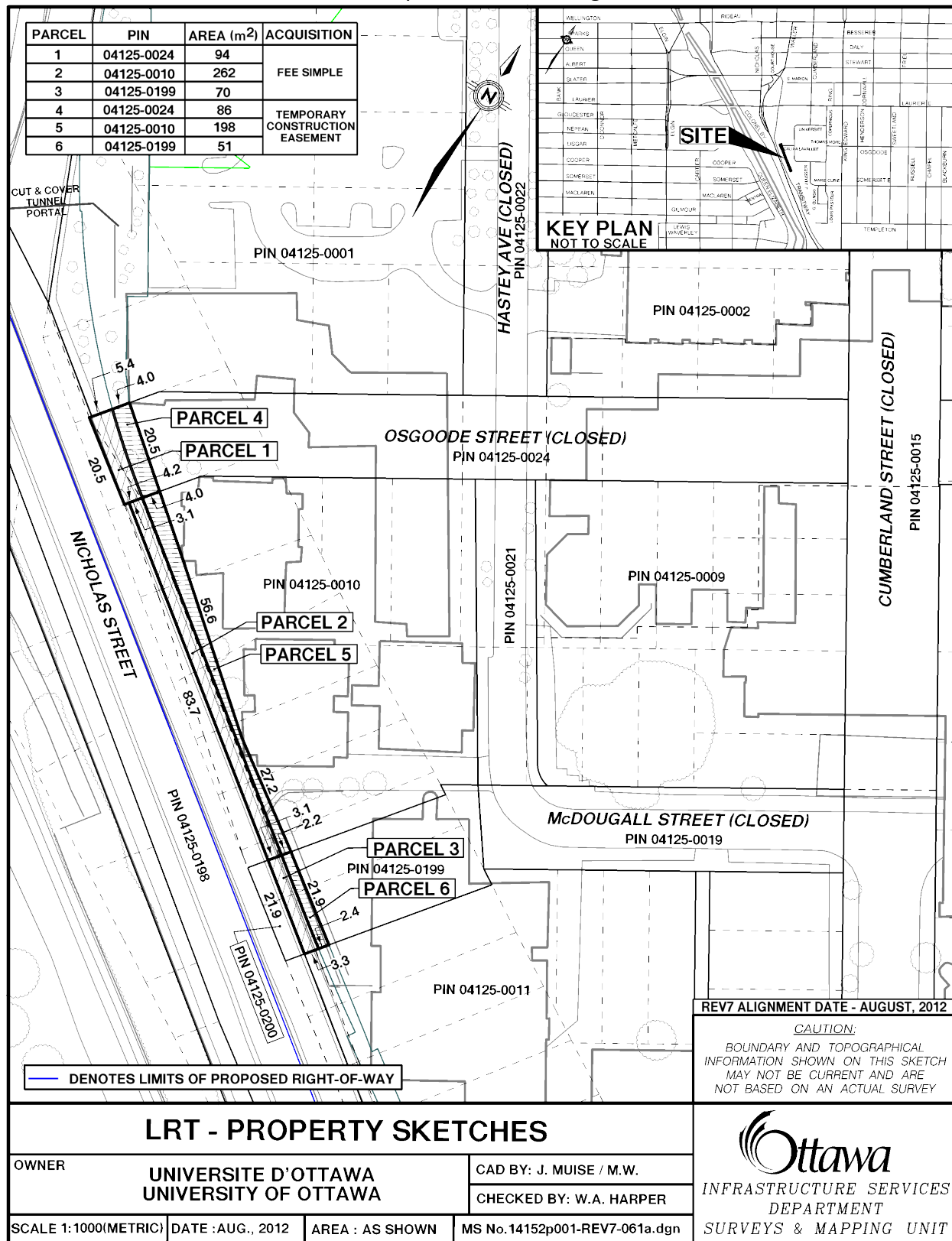
14152p001-REV7-039c.dgn



14152p001-REV7-059d.dgn



14152p001-REV7-061a.dgn



14152p001-REV7-246c.dgn

